



North American  
Safety Valve  
Industries, Inc.



**35,000** Safety & Relief Valves  
Ready to Ship

When the pressure is on, trust North American Safety Valve Industries

## We're Always on Standby

When you're under pressure, NASVI's ready to help.



### New & Remanufactured Safety Valves

Extensive stock of new valves from trusted, top manufacturers and dependable remanufactured valves back by a 2-year warranty.



### Same or Next-Day Shipping

Avoid or minimize downtime with NASVI's same or next-day shipping.



### State-of-the-Art Repair & Setting Centers

Nearly every safety valve's specifications are at our technicians' fingertips for exact work. Generally, irreparable valves can be replaced from our in-stock inventory.



### Turnaround Exchange Program

Receive the valves needed for installation prior to shutting down, then ship us the old valves for repair or exchange.

## Get an Instant Quote

[nasvi.com/quote](http://nasvi.com/quote)

1600 Warren St.  
North Kansas City, MO 64116

Phone: (800) 800-8882

Phone: (816) 421-7042

Fax: (816) 421-0297

[sales@nasvi.com](mailto:sales@nasvi.com)

spec sheet

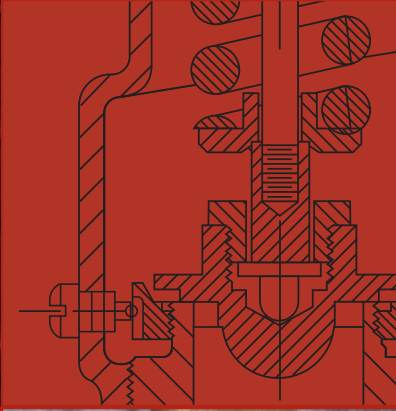
ASME Section I and VIII Safety Valve  
Manufacturer. Steam, Air, Gas and  
Liquid Applications.

**Air/Gas**



**Aquatrol, Inc.**  
600 E. North Street  
P.O. Box 8012  
Elburn, IL 60119

**Steam**

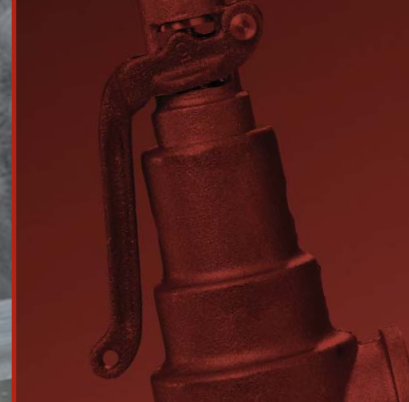


**NEW — Series 560**

**Liquid**



**Specialty**



**Aquatrol, Inc.**  
600 E. North Street  
P.O. Box 8012  
Elburn, IL 60119

1-800-323-0688  
630-365-5400  
Fax: 630-365-5434  
www.aquatrol.com  
Email: sales@aquatrol.com

ASME Section I and VIII Safety Valve  
Manufacturer. Steam, Air, Gas and  
Liquid Applications.



ASME Safety & Relief  
Valve Manufacturer  
Since 1947

**Aquatrol**  
Safety & Relief Valves

**Aquatrol**  
Safety & Relief Valves

# SAFETY VALVES

ASME Section I & VIII - NB Certified for Air, Gas and Steam

SIZES FROM 1/2" TO 2 1/2"  
NB RATED TO 250#  
TEMPERATURES TO 406°

Aquatrol's Series 560/570 valve line is a high capacity safety valve used for boilers, piping lines and vessel protection. Designed and engineered for heavy-duty industrial use. ASME approved and National Board flow-rated for capacity.

## Series 560 & 570

### Usages:

- Series 560 – Use for ASME Section I applications to pressure ratings of 250 PSI. V and NB stamped for fired vessels. Boilers, or most areas where steam safety valves are required.
- Series 570 – Use for ASME Section VIII applications to pressure ratings of 250 PSI. UV and NB stamped for unfired vessel protection. Used for many applications to protect or relieve pressure for Air, Gas and Steam.

### Features:

- Designed for durability
- 6 orifices – 12 sizes of piping options
- Top guided seating and discharge
- Full nozzle; high capacity levels
- Excellent re-seating characteristics with pivoting ball-post design
- Short, tuned blow-down and can be adjusted with double ring to meet specific requirements
- Heavy duty hood and lever mechanism
- Standard 17-7 stainless steel springs

### Options:

- Stainless steel whetted trimming package (seat, disk and interiors)
- O-ring seating. (Teflon, EDPM, Viton, or as specified)
- Bubble tight seating options
- Anti vibrating spring for lift lever
- Packed lift lever
- BPT pipe threading

### Ordering:

- Specify series (560/570), special seating options, piping size, set pressure PSI, capacity requirements when ordering
- See opposite page for details

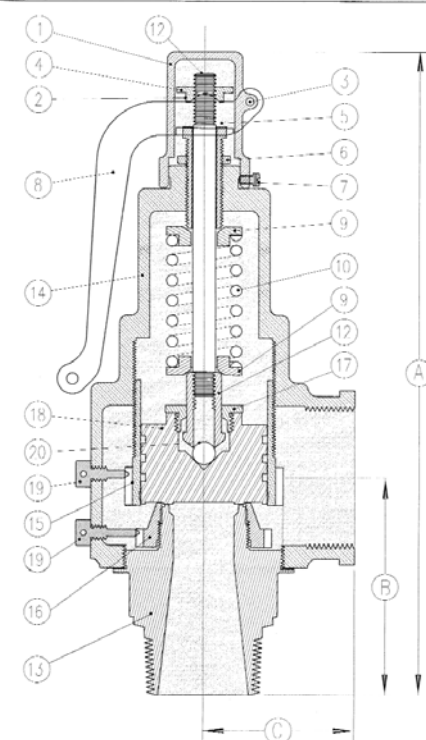
MAX TEMP BRASS BRONZE 406°

**SERIES 560**

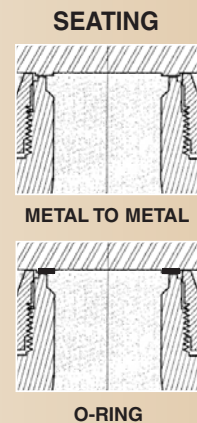


#### APPLICATIONS INCLUDE:

Steam Boilers, Air Compressors, Dryers, Receivers, Pressure Vessels, Piping Systems, Accumulators, Reducing Stations, Tanks, Inter/After Coolers, Cooking Equipment, Autoclaves, Sterilizers or wherever higher capacity pressure protection or relief may be required.



PARTS IDENTIFICATION & MATERIALS			
ITEM	PART NAME	MATERIAL	ASTM
1	HOOD	CAST BRASS	
2	COTTER PIN		
3	LIFT LEVER PIN	BRASS	
4	LIFTER NUT	BRASS	B-16
5	PRESSURE SCREW	BRASS	B-16
6	LOCK NUT	BRASS	B-16
7	HOOD SCREW	BRASS	
8	LIFT LEVER	CAST BRASS	
9	SPRING PLATE	BRASS	B-16
10	SPRING	STAINLESS STEEL	
11	NAMEPLATE	ALUMINUM	
12	SPRING POST	BRASS	B-16
13	BODY	BRASS	B-16
		CAST BRASS	B-61, 62
14	BONNET	CAST BRASS	B-61, 62
15	UPPER RING	CAST BRASS	
16	LOWER RING	CAST BRASS	
17	DISC NUT	BRASS	B-16
18	DISC	BRASS	B-16
19	REGULATOR SCREW	BRASS	B-16
20	BALL BEARING	STAINLESS STEEL	



## SERIES 560/570 DIMENSIONS • AIR/GAS/STEAM

SERIES NO.	ORIFICE I.D.	ORIFICE SIZE	INLET (in)	OUTLET (in)	SIZE I.D.	-----DIMENSIONS-----			WEIGHT (lbs)
						A	B	C	
560	D	0.125	1/2	3/4	A	7.312	2.468	1.5	1.9
560	D	0.125	3/4	3/4	B	7.312	2.468	1.5	2.2
560	E	0.221	3/4	1	C	7.625	2.5	1.625	2.8
560	E	0.221	1	1	D	7.625	2.5	1.625	3.0
560	F	0.342	1	1 1/4	E	8.625	2.75	1.75	4.0
560	F	0.342	1 1/4	1 1/4	F	8.625	2.75	1.75	4.2
560	G	0.478	1 1/4	1 1/2	G	9.25	3.218	2.25	6.7
560	G	0.478	1 1/2	1 1/2	H	9.25	3.218	2.25	6.9
560	H	0.899	1 1/2	2	J	10.875	3.625	2.5	11.4
560	H	0.899	2	2	K	10.875	3.625	2.5	11.6
560	J	0.463	2	2 1/2	L	12.062	3.937	3.125	15.6
560	J	0.463	2 1/2	2 1/2	M	12.062	3.937	3.125	16.3

Metric Equivalents: Centimeters = Inches x 2.540 Kg = Lbs x .4536

SEATING / TRIM OPTIONS	
560 BRASS/BRONZE	570 BRASS BRONZE
561 TEFLON	571 TEFLON
562 O-RING	572 O-RING
563 STAINLESS TRIM	573 STAINLESS TRIM
564 SPECIAL	564 SPECIAL

NO = 561 (Teflon Seat) G = Orifice H = Piping Size  
 SIZE = M x F Piping Size  
 SET = Set Pressure (PSI)  
 CAP = #/HR Steam  
 CAP = SCFM Air/Gas  
 AQC = Internal Tracking (QA)  
 DATE = Month/Year  
 V = Fired Vessel (Sec. I)  
 UV = Unfired Vessel (Sec. VIII)  
 NB = National Board Certified





Capacity ratings based on pounds per hour of saturated steam at 3% over pressure. NB certified at 90% of accumulated flow.

**SERIES 560 CAPACITIES • STEAM • ASME SECTION I**

Section I (V)-National Board Certified		CAPACITIES					
SET PRESSURE PSI	ORIFICE D .125	ORIFICE E .221	ORIFICE F .352	ORIFICE G .567	ORIFICE H .899	ORIFICE J 1.463	
5*	120	211	337	542	860	1400	
10*	147	260	414	667	1058	1722	
15	175	309	492	792	1256	2044	
20	213	377	601	967	1534	2496	
25	230	406	647	1042	1653	2689	
30	257	455	725	1167	1851	3012	
35	285	504	802	1292	2049	3334	
40	312	552	880	1417	2247	3657	
45	340	601	957	1542	2445	3979	
50	368	650	1035	1667	2643	4302	
55	395	699	1113	1792	2842	4624	
60	423	747	1190	1917	3040	4947	
65	450	796	1268	2042	3238	5269	
70	478	846	1347	2170	3440	5598	
75	506	895	1426	2297	3642	5927	
80	535	946	1507	2427	3848	6262	
85	563	996	1586	2555	4050	6591	
90	592	1046	1667	2685	4256	6927	
95	620	1096	1746	2812	4459	7256	
100	649	1147	1826	2942	4665	7591	
110	705	1247	1986	3199	5073	8255	
120	762	1347	2146	3457	5481	8920	
130	819	1448	2306	3714	5889	9584	
140	876	1548	2466	3972	6297	10248	
150	932	1648	2626	4229	6706	10913	
160	989	1749	2785	4487	7114	11577	
170	1046	1849	2945	4744	7522	12241	
180	1103	1949	3105	5002	7930	12905	
190	1159	2050	3265	5259	8338	13570	
200	1216	2150	3425	5517	8747	14234	
210	1273	2251	3585	5774	9155	14898	
220	1330	2351	3744	6031	9563	15563	
230	1386	2451	3904	6289	9971	16227	
240	1443	2552	4064	6546	10379	16891	
250	1500	2652	4224	6804	10788	17556	
260*	1557	2752	4384	7061	11196	18220	
270*	1613	2853	4544	7319	11604	18884	
280*	1670	2953	4703	7576	12012	19548	
290*	1727	3053	4863	7834	12421	20213	
300*	1784	3154	5023	8091	12829	20877	

BAR = PSI x .06895 Kilograms = PPH x .4536  
\*Not ASME/NB over 250 PSI.



Capacity ratings based on SCFM (standard cubic feet per minute) of Air at 10% over pressure. NB certified at 90% of measured flow.

**SERIES 570 CAPACITIES • AIR/GAS • ASME SECTION VIII**

Section VIII (UV)-National Board Certified		CAPACITIES					
SET PRESSURE PSI	ORIFICE D .125	ORIFICE E .221	ORIFICE F .352	ORIFICE G .567	ORIFICE H .899	ORIFICE J 1.463	
5	45	79	125	202	320	521	
10	54	96	153	246	391	636	
15	64	113	181	291	461	751	
20	74	131	208	335	532	865	
25	84	148	236	380	602	980	
30	94	165	263	424	673	1095	
35	104	184	294	473	750	1221	
40	115	204	324	522	828	1348	
45	126	223	355	571	906	1474	
50	137	242	385	620	983	1600	
55	147	261	415	669	1061	1726	
60	158	280	446	718	1138	1853	
65	169	299	476	767	1216	1979	
70	180	318	506	816	1294	2105	
75	191	337	537	865	1371	2231	
80	201	356	567	914	1449	2358	
85	212	375	598	963	1526	2484	
90	223	394	628	1012	1604	2610	
95	234	413	658	1061	1681	2736	
100	245	432	689	1109	1759	2863	
110	266	471	750	1207	1914	3115	
120	288	509	810	1305	2069	3368	
130	309	547	871	1403	2225	3620	
140	331	585	932	1501	2380	3873	
150	352	623	993	1599	2535	4125	
160	374	661	1053	1697	2690	4378	
170	396	699	1114	1795	2845	4630	
180	417	738	1175	1892	3000	4883	
190	439	776	1236	1990	3156	5135	
200	460	814	1296	2088	3311	5388	
210	482	852	1357	2186	3466	5640	
220	503	890	1418	2284	3621	5893	
230	525	928	1479	2382	3776	6145	
240	547	966	1539	2480	3931	6398	
250	568	1005	1600	2577	4087	6650	
260*	590	1043	1661	2675	4242	6903	
270*	611	1081	1722	2773	4397	7156	
280*	633	1119	1782	2871	4552	7408	
290*	655	1157	1843	2969	4707	7661	
300*	676	1195	1904	3067	4863	7913	

BAR = PSI x .06895 NM<sup>3</sup>/HR = SCFM x 1.630  
\*Not ASME/NB over 250 PSI.



Capacity ratings based on pounds per hour of saturated steam at 10% over pressure. NB certified at 90% of accumulated flow.

### SERIES 570 CAPACITIES • STEAM • ASME SECTION VIII

Section VIII (UV)-National Board Certified		CAPACITIES					
SET PRESSURE PSI	ORIFICE D .125	ORIFICE E .221	ORIFICE F .352	ORIFICE G .567	ORIFICE H .899	ORIFICE J 1.463	
5*	125	221	352	567	900	1464	
10*	153	270	430	692	1098	1787	
15	180	319	507	817	1296	2109	
20	208	367	585	942	1494	2431	
25	235	416	663	1067	1692	2754	
30	263	465	740	1192	1890	3076	
35	293	518	826	1330	2108	3431	
40	323	572	911	1467	2326	3786	
45	354	625	996	1605	2544	4141	
50	384	679	1082	1742	2762	4495	
55	414	733	1167	1880	2980	4850	
60	445	786	1252	2017	3198	5205	
65	475	840	1338	2155	3416	5559	
70	505	893	1423	2292	3634	5914	
75	536	947	1508	2430	3852	6269	
80	566	1001	1594	2567	4070	6624	
85	596	1054	1679	2705	4288	6978	
90	627	1108	1764	2842	4506	7333	
95	657	1161	1850	2979	4724	7688	
100	687	1215	1935	3117	4942	8043	
110	748	1322	2106	3392	5378	8752	
120	808	1429	2276	3667	5814	9461	
130	869	1536	2447	3942	6250	10171	
140	930	1644	2618	4217	6686	10880	
150	990	1751	2789	4492	7122	11590	
160	1051	1858	2959	4767	7558	12299	
170	1111	1965	3130	5042	7994	13009	
180	1172	2072	3301	5317	8430	13718	
190	1233	2179	3471	5592	8866	14428	
200	1293	2287	3642	5866	9302	15137	
210	1354	2394	3813	6141	9737	15846	
220	1415	2501	3983	6416	10173	16556	
230	1475	2608	4154	6691	10609	17265	
240	1536	2715	4325	6966	11045	17975	
250	1596	2822	4495	7241	11481	18684	
260*	1657	2930	4666	7516	11917	19394	
270*	1718	3037	4837	7791	12353	20103	
280*	1778	3144	5008	8066	12789	20813	
290*	1839	3251	5178	8341	13225	21522	
300*	1899	3358	5349	8616	13661	22231	

BAR = PSI x .06895 Kilograms = PPH x .4536

\*Not ASME/NB over 250 PSI.

# Liquid Relief Valves

SIZES FROM 1/4" TO 3"  
PRESSURE TO 750#  
TEMPERATURES TO 450°

Series 69 is an industry standard relief valve used for liquid applications. Engineered and designed for heavy-duty industrial usages. Series 51 and 55 are used for smaller sized applications or where space may be a factor. Single piece bonnets with sealed hex-caps to minimize leakage.



## Series 69, 51 & 55

### Usages

- Pressure relief, liquid relief, by-pass and over-protection
- Continuous relief
- Pressure regulation
- Pumping stations, tanks, hydraulics, fluid lines, oil fields, piping lines

### Features

- Field adjustable
- Metal-to-metal precision lapped seating
- Sealed hex cap with O-ring teflon seal
- One piece enclosed bonnet to minimize leakage
- Back pressure tested against leakage (now standard)
- Easy to clean and maintain by simple removal of the bonnet
- 302 Stainless steel springs (STD)

### Options

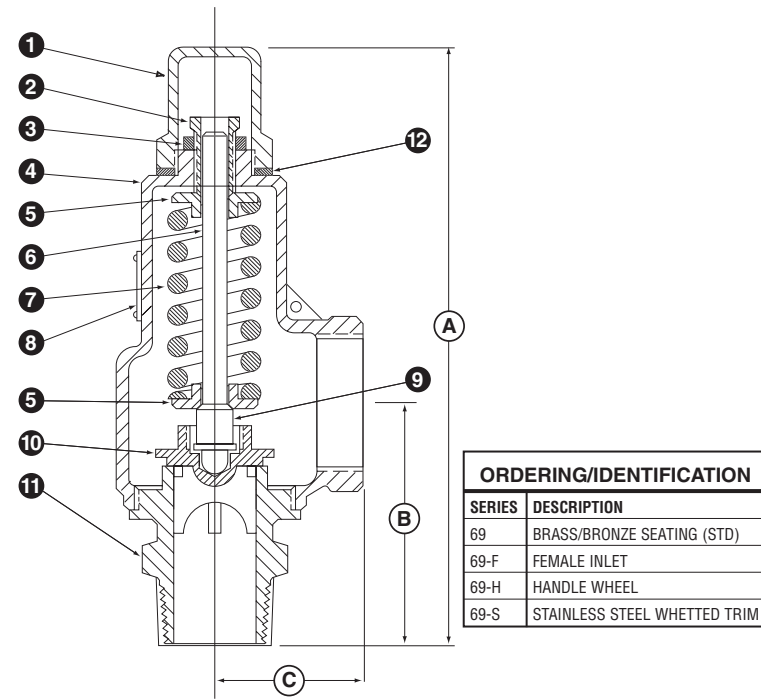
- Wheel handle
- Same size or next size outlet (see chart – standard for liquid relief is same size outlet)
- Female inlet
- 302 Stainless steel whetted trimming
  - Chemical reactivity or abrasiveness of fluids
  - Pressure settings over 400 PSI
- Available with tamper-resistant seal
- BSPT connects
- Chrome plating/polishing
- Stainless steel disk (only)



SEE CAPACITY AND SIZE CHARTS

PARTS IDENTIFICATION & MATERIALS		
ITEM	PART NAME	MATERIAL
1	HOOD	BRASS
2	PRESSURE SCREW	BRASS
3	LOCK NUT	BRASS
4	BONNET	BRONZE
5	SPRING PLATE	BRASS/STEEL *
6	SPRING POST	BRASS/STEEL *
7	SPRING	STAINLESS STEEL
8	NAME PLATE	ALUMINUM
9	SPRING PLATE SUPPORT	BRASS/STEEL *
10	DISC	BRONZE
11	BODY	BRASS/BRONZE
12	SEALING DISK	TEFLON

\* STEEL PLATED



**SERIES 69 CAPACITIES** Liquid Capacity in Gallons Per Minute (GPM) at 25% Over Pressure

SIZES: 1/2"-3"	CAPACITIES							
	A	B	C	D	E	F	G	H
SET PRESSURE	1/2"	3/4"	1"	1 1/4"	1 1/2"	2"	2 1/2"	3"
5	3.9	7.7	12	17	22	33	44	55
10	5.6	8.1	17	24	31	46	62	78
15	6.8	13	21	29	38	56	76	95
20	7.9	15	24	34	44	65	88	111
25	8.8	17	27	38	49	73	98	124
30	9.7	19	29	41	53	80	107	136
40	11	22	34	48	62	92	124	157
50	12	24	38	53	69	103	139	175
60	13	26	42	58	75	112	151	190
75	15	30	47	65	85	126	170	21
100	18	34	54	76	98	146	196	248
125	20	38	60	85	109	163	219	277
150	22	42	66	93	120	178	240	303
175	23	45	71	100	129	193	259	328
200	25	48	76	107	138	206	277	350
225	26	51	80	113	146	218	293	371
250	28	54	85	120	154	230	310	392
275	29	56	89	125	161	240	325	410
300	31	59	93	131	169	252	340	429
325	32	61	97	136	176	262		
350	33	64	101	141	183	272		
375	34	66	104	146	189	281		
400	35	68	108	151	195	291		
425	36	70	112	156	201	302		
450	37	72	115	162	208	314		
475	38	75	119	167	215	326		
500	39	77	123	171	221	337		
525	40	79	126	176	227	348		
550	41	81	130	180	234	359		
575	42	83	134	185	240	371		
600	43	86	138	189	247	383		

Recommended: Stainless Steel Trim Package for pressure settings over 400 PSI. (Disk and seat insert).

LITERS PER MINUTE = GPM x 3.785    BAR = PSI x .06895

**SERIES 51 & 55 CAPACITIES** Water Capacity in Gallons Per Minute (GPM) at 25% Over Pressure

SIZES: 1/4"-3/8"-1/2"													
PSI SET PRESSURE	10	20	30	40	50	75	100	150	200	300	400	500	750
	3.3	4.7	5.7	6.6	7.4	9.1	10.5	12.7	14.6	17.8	20.6	23	28.2

**SERIES 51, 55 & 69 DIMENSIONS • LIQUID**

SERIES	VALVE SIZE	OUTLET SIZE	SEAT SIZE	DIMENSIONS			MAX. SET PRESSURE LIQUID	WEIGHT LBS
				A	B	C		
69	1/2"	1/2"	1/2" - A	5 7/8	2 1/8	1 3/8	600	1.5
69	1/2"	3/4"	1/2" - A	5 7/8	2 1/8	1 3/8	600	1.5
69	3/4"	3/4"	3/4" - B	6	2 3/8	1 3/8	600	2
69	3/4"	1"	3/4" - B	6	2 3/8	1 3/8	600	2
69	1"	1"	1" - C	7 1/2	2 5/8	1 7/8	600	3
69	1"	1 1/4"	1" - C	7 1/2	2 5/8	1 7/8	600	3
69	1 1/4"	1 1/4"	1 1/4" - D	8 1/2	3 1/4	2	600	4.5
69	1 1/4"	1 1/2"	1 1/4" - D	8 1/2	3 1/2	2	600	4.5
69	1 1/2"	1 1/2"	1 1/2" - E	9 3/4	3 1/2	2 1/2	600	6.5
69	1 1/2"	2"	1 1/2"	9 3/4	3 1/2	2 1/2	600	6.5
69	2"	2"	2" - F	11 1/8	4	2 5/8	600	9.25
69	2"	2 1/2"	2" - F	11 1/8	4	2 5/8	600	9.25
69	2 1/2"	2 1/2"	2-1/2" - G	12	4 3/4	3 1/8	600	21
69	2 1/2"	3"	2 1/2" - G	12	4 3/4	3 1/8	600	22
69	3"	3"	3" - H	13 1/2	5 1/8	4 3/8	600	24
51	1/4"-3/8"-1/2"	1/2"	1/2" - A	5 1/4	1 3/8	1 1/8	750	.875
55	1/4"-3/8"-1/2"	1/2"	1/2" - A	3	1 3/4	1 1/8	200	.875

STANDARD VALVE FOR LIQUID RELIEF IS "SAME SIZED OUTLET" (UNLESS OTHERWISE SPECIFIED)  
 PLEASE SPECIFY SERIES, SIZE, SERVICE & SET PRESSURE  
 STAINLESS STEEL TRIMMING RECOMMENDED FOR PRESSURE SETTINGS OVER 400 PSI (OR FOR CHEMICAL REACTIVE PURPOSES)  
 2-1/2 & 3" MAX SET PRESSURE 350 PSI

# STEAM • AIR • GAS ASME Section VIII - NB Certified for Air, Gas and Steam applications.

SIZES FROM 1/2" TO 3"  
PRESSURE TO 250#  
TEMPERATURES TO 406°

Series 88 and 89 are multiple purpose safety valves for steam, air or gas protection. Designed for durability, yet an economical choice for safety and relief applications. UV stamped; factory set and sealed. Choose for a variety of applications.



## Series 88 & 89

### Usages:

- Over-pressure protection
- Pressure vessels
- Piping systems
- Safety relief
- Compressors and dryers
- Vacuum relief
- Pressure reducing stations
- Intercoolers and aftercoolers
- Pressured piping lines and tanks

### Features:

- Adjustable tuned blow-down
- Precision lapped metal-to-metal seating.
- Stainless steel springs
- Ruggedly constructed
- Closed seal hex cap or lever\* option
- Wide variety of inlet and outlet options
- Disk-guided seat provides quick, accurate and excellent re-seating

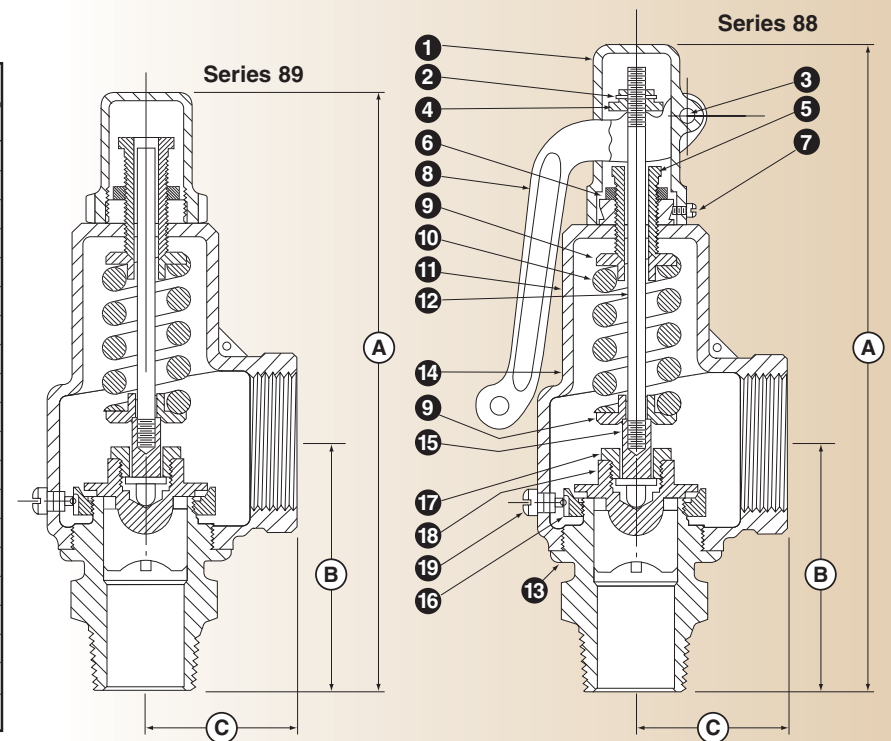
### Options:

- Stainless steel whetted trimming (seat and disk)
- Chrome plating
- Oxygen cleaning
- Female inlet
- BSPT connections

\* LIFT LEVER IS REQUIRED BY THE NATIONAL BOARD FOR STEAM SERVICES.  
2-1/2" AND 3" ARE NOT NB CERTIFIED.  
PLEASE SEE CAPACITY AND SIZE CHARTS.

PARTS IDENTIFICATION & MATERIALS		
ITEM	PART NAME	MATERIAL
1	HOOD	BRONZE
2	COTTER PIN	STEEL*
3	LIFT LEVER PIN	BRASS
4	LIFTER NUT	BRASS/STEEL*
5	PRESSURE SCREW	BRASS
6	LOCK NUT	BRASS
7	HOOD SCREW	BRASS
8	LIFT LEVER	BRONZE
9	SPRING PLATE	BRASS/STEEL*
10	SPRING	STAINLESS STEEL
11	NAME PLATE	BRASS/BRONZE
12	SPRING POST	BRASS/STEEL
13	BODY	BRASS
14	BONNET	BRASS/BRONZE
15	SPRING PLATE SUPPORT	BRASS
16	REGULATOR RING	BRASS
17	SPRING PLATE	BRASS
18	DISK	BRASS/BRONZE
19	REGULAR SCREW	BRASS

\*STEEL PLATED



## SERIES 88 & 89 DIMENSIONS • AIR/GAS/STEAM

SERIES	VALVE SIZE	OUTLET SIZE	SEAT SIZE	-----DIMENSIONS-----				MAX. SET PRESSURE AIR/GAS/STEAM	WEIGHT SERIES 88	WEIGHT SERIES 89
				SERIES 88 A	SERIES 89 A	B	C			
88-A1	1/2"	1/2"	A-1/2"	6 1/2	5 7/8	2 1/8	1 3/8	300	2	1.5
88-A2	1/2"	3/4"	A-1/2"	6 1/2	5 7/8	2 1/8	1 3/8	300	2	1.5
88-B1	3/4"	3/4"	B-3/4"	6 7/8	6	2 3/8	1 3/8	300	2.5	2
88-B2	3/4"	1"	B-3/4"	6 7/8	5	2 3/8	1 3/8	300	2.5	2
88-C1	1"	1"	C-1"	7 1/2	7 1/2	2 3/4	1 7/8	300	3.375	3
88-C2	1"	1 1/4"	C-1"	7 1/2	7 1/2	2 3/4	1 7/8	300	3.375	3
88-D1	1 1/4"	1-1/4"	D-1 1/4"	8 1/2	8 1/2	3 1/4	2	300	4.625	4.5
88-D2	1 1/4"	1 1/2"	D-1 1/4"	8 1/2	8 1/2	3 1/4	2	300	4.625	4.5
88-E1	1 1/2"	1-1/2"	E-1 1/2"	9 3/4	9 3/4	3 1/2	2 1/2	300	7	6.5
88-E2	1 1/2"	2"	E-1 1/2"	9 3/4	9 3/4	3 1/2	2 1/2	300	7	6.5
88-F1	2"	2"	F-2"	11 1/8	11 1/8	4	2.625	300	10.125	9.25
88-F2	2"	2 1/2"	F-2"	11 1/8	11 1/8	4	2.625	300	10.125	9.25
88-G1	2 1/2"	2 1/2"	G-2 1/2"	13 1/4	12	4 3/4	3 1/8	300	22.25	21
88-G2	*2 1/2"	3"	G-2 1/2"	13 1/4	12	4 3/4	3 1/8	300	22.25	21
88-H1	*3"	3"	H-3"	15	13 1/2	5 1/8	4 3/8	300	23	22

STANDARD VALVE FOR AIR, GAS AND STEAM IS "NEXT SIZED OUTLET" (UNLESS OTHERWISE SPECIFIED)

BAR = PSI x .06895 Centimeters = Inches x 2.540 KG = LBS x .4536  
\*2 1/2" & 3" ORIFICE AND PRESSURES OVER 250 PSI-NOT ASME/NB.  
PLEASE SPECIFY SERIES, SIZE, SERVICE AND SET PRESSURE.





**SERIES 88 & 89 CAPACITIES • AIR/GAS** Air/Gas Capacities in Cu. Ft. Per Minute (SCFM) ASME

ASME Code Section VIII (UV)-National Board Certified  
 Sizes: 1/2" - 3"

SET PRESSURE	CAPACITIES							
	A 1/2"	B 3/4"	C 1"	D 1 1/4"	E 1 1/2"	F 2"	G* 2 1/2"	H* 3"
5	13	18	46	71	99	150	281	343
10	17	24	58	90	126	190	348	441
15	20	29	71	109	153	231	418	530
20	24	34	83	129	180	272	492	623
25	27	39	96	148	207	312	565	717
30	31	44	108	167	234	353	639	810
35	34	49	121	186	261	394	714	903
40	38	55	133	206	288	435	787	997
45	41	60	146	225	315	475	861	1090
50	45	65	158	244	341	516	934	1184
55	48	70	171	264	368	557	1009	1277
60	52	75	183	283	395	598	1082	1370
65	55	80	196	302	422	638	1156	1464
70	59	85	208	321	449	679	1230	1557
75	63	90	221	341	476	720	1302	1650
80	66	95	234	360	503	760	1378	1744
85	70	101	246	379	530	801	1452	1837
90	73	106	259	398	557	842	1525	1934
95	77	111	271	418	584	883	1599	2024
100	80	116	284	437	611	923	1671	2117
110	87	126	309	475	665	1005	1818	2304
120	94	136	334	514	719	1086	1968	2491
130	102	147	359	553	773	1168	2116	2678
140	112	162	396	610	754	1290	2337	2958
150	116	167	409	630	880	1330	2408	3051
160	123	177	434	668	934	1412	2558	3238
170	130	188	459	707	988	1493	2706	3425
180	137	198	484	745	1042	1575	2854	3612
190	144	208	509	784	1096	1656	3001	3798
200	151	218	534	822	1150	1738	3145	3985
210	158	228	559	861	1204	1819	3296	4172
220	165	239	584	899	1258	1900	3444	4359
230	172	249	609	938	1312	1982	3591	4545
240	179	259	634	977	1366	2063	3739	4732
250	187	269	659	1015	1420	2145	3882	4919
260*	194	279	684	1053	1474	2227	4025	5106
270*	201	289	709	1091	1528	2309	4168	5293
280*	208	299	734	1129	1582	2391	4311	5480
290*	215	309	759	1167	1636	2473	4454	5667
300*	222	319	784	1205	1690	2555	4597	5854

BAR = PSI x .06895 NM<sup>3</sup>/HR = SCFM x 1.630  
 \*2 1/2" & 3" AND PRESSURES OVER 250 PSI - NOT ASME/NB

**SERIES 88 CAPACITIES • STEAM** Steam Capacity in Pounds Per Hour (#/Hr)

ASME Code Section VIII (UV)-National Board Certified  
 Sizes: 1/2" - 3"

SET PRESSURE	CAPACITIES							
	A 1/2"	B 3/4"	C 1"	D 1 1/4"	E 1 1/2"	F 2"	G* 2 1/2"	H* 3"
5	37	53	129	199	279	420	763	960
10	47	67	164	253	355	535	968	1221
15	56	81	199	307	431	649	1173	1483
20	66	96	235	361	507	763	1383	1745
25	76	110	270	415	582	878	1590	2006
30	86	124	305	469	658	992	1797	2267
35	96	139	340	523	734	1107	2004	2529
40	106	153	375	578	810	1221	2212	2790
45	116	168	410	632	886	1335	2418	3052
50	126	182	445	686	962	1450	2626	3313
55	136	196	480	740	1038	1564	2833	3575
60	146	211	516	794	1114	1679	3040	3836
65	156	225	551	848	1190	1793	3247	4098
70	166	239	586	902	1265	1907	3454	4359
75	176	254	621	956	1341	2022	3662	4620
80	186	268	656	1011	1417	2136	3869	4882
85	196	282	691	1065	1493	2251	4076	5143
90	206	297	726	1119	1569	2365	4283	5405
95	216	311	762	1173	1645	2479	4490	5667
100	226	325	797	1227	1721	2594	4698	5928
110	246	354	867	1335	1873	2823	5113	6451
120	266	383	937	1443	2024	3051	5526	6974
130	285	412	1007	1552	2176	3280	5940	7497
140	305	440	1078	1660	2328	3509	6355	8020
150	325	469	1148	1768	2480	3738	6771	8542
160	345	498	1219	1876	2632	3967	7184	9066
170	365	526	1289	1985	2783	4195	7598	9589
180	385	555	1359	2093	2935	4424	8012	10111
190	405	584	1429	2201	3087	4653	8427	10635
200	425	613	1500	2309	3239	4882	8843	11157
210	445	641	1570	2418	3391	5111	9256	11680
220	465	670	1640	2526	3542	5339	9670	12204
230	485	699	1711	2634	3694	5568	10084	12726
240	505	727	1781	2742	3846	5797	10499	13249
250	525	756	1851	2841	3998	6026	10915	13772
260*	545	785	1921	2949	4150	6255	11330	14295
270*	565	814	1991	3057	4302	6484	11745	14818
280*	585	843	2061	3165	4454	6713	12160	15341
290*	605	872	2131	3273	4606	6942	12575	15864
300*	625	901	2201	3381	4758	7171	12990	16387

BAR = PSI x .06895 Kilograms = PPH x .4536  
 \*2 1/2" & 3" AND PRESSURES OVER 250 PSI - NOT ASME/NB



# STEAM • AIR • GAS • LIQUID

SIZES 1/2" TO 1"  
 PRESSURE TO 750#  
 (AIR/GAS LIQUID)  
 PRESSURE TO 300# (STEAM)  
 TEMPERATURE TO 406°

Series 17 and 18 are non-coded valves servicing air, gas, liquid and steam applications (with the exception of steam boilers), and are used where higher pressure settings are required.

## Series 17 & 18

### Usages:

- Pressure relief, by-pass and overpressure protection
- Steam, Air, Gas and Liquid settings

### Features:

- Stainless steel springs
- Precision lapped metal-to-metal beveled seating
- Ruggedly built bronze and brass connections
- Hood or lift lever (lift lever required on steam)
- Fixed blow-down (built into the valve body) for ease of cleaning and setting

### Options:

- Oxygen cleaning
- Chrome plating

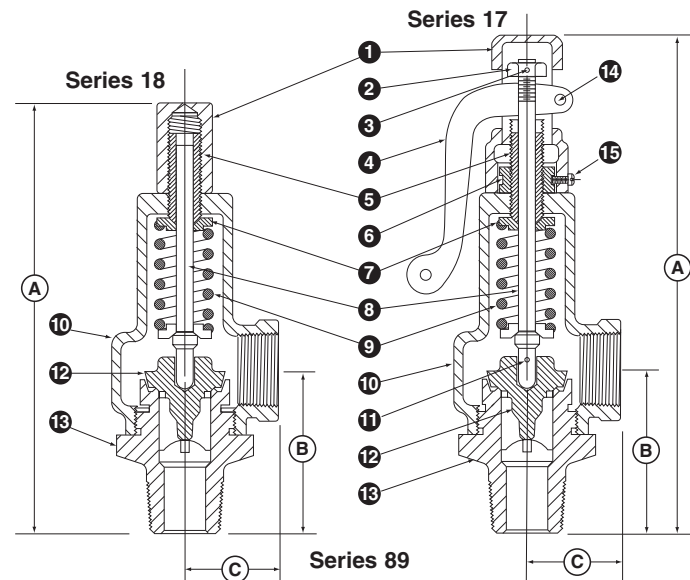
**SERIES 17**



**SERIES 18**



PARTS IDENTIFICATION & MATERIALS		
ITEM	PART NAME	MATERIAL
1	HOOD	BRASS
2	LOCK NUT	BRASS
3	COTTER PIN	STEEL
4	LIFT LEVER	BRONZE
5	PRESSURE SCREW	BRASS
6	PRESS. SCREW LOCK	BRASS
7	SPRING PLATE	BRASS
8	SPRING POST	BRASS
9	SPRING	STAINLESS STEEL
10	BONNET	BRONZE
11	POST	BRONZE
12	DISK	BRASS
13	BODY	BRASS
14	LIFT LEVER PIN	BRASS
15	LOCK SCREW	BRASS



## SERIES 17 & 18 DIMENSIONS • AIR • STEAM • GAS • LIQUID

SERIES	INLET SIZE	SEAT SIZE	OUTLET SIZE	MAX SET PRESSURE		DIMENSIONS				WEIGHT	
				AIR OR LIQUID	STEAM	A SERIES 17	A SERIES 18	B	C	SERIES 17	SERIES 18
17-2-B OR 18-2-B	1/2"	9/16"	1/2"	300	300	6 3/8"	5 3/8"	2 1/4"	1 1/8"	1 1/4"	1 1/8"
17-2-C OR 18-2-C	1/2"	9/16"	3/4"	750	300	6 1/2"	5 7/8"	2 1/4"	1 3/8"	2	1 7/8"
17-2-D OR 18-2-D	3/4"	9/16"	3/4"	750	300	6 1/2"	5 7/8"	2 1/4"	1 3/8"	2	1 7/8"
17-2-E OR 18-2-E	3/4"	9/16"	1"	750	300	6 5/8"	5 7/8"	2 3/8"	1 1/2"	2 1/4"	2 1/8"
17-2-F OR 18-2-F	1"	9/16"	1"	750	300	6 3/4"	5 7/8"	2 3/8"	1 1/2"	2 3/8"	2 1/4"
17-2-G OR 18-2-G	1"	9/16"	1 1/2"	750	300	6 3/4"	6 5/8"	2 7/8"	2 1/8"	3	2 3/4"
17-3-H OR 18-3-H	1/2"	3/4"	3/4"	750	300	6 1/2"	5 7/8"	2 1/4"	1 3/8"	2	1 7/8"
17-3-K OR 18-3-K	3/4"	3/4"	3/4"	750	300	6 1/2"	5 7/8"	2 1/4"	1 3/8"	2	1 7/8"
17-3-L OR 18-3-L	3/4"	3/4"	1"	750	300	6 3/4"	5 7/8"	2 1/4"	1 1/2"	2 1/4"	2 1/8"
17-3-M OR 18-3-M	1"	3/4"	1"	750	300	6 3/4"	5 7/8"	2 1/4"	1 1/2"	2 3/8"	2 1/4"
17-3-P OR 18-3-P	1"	3/4"	1 1/2"	750	300	6 3/4"	6 5/8"	2 7/8"	2 1/8"	3	2 3/4"

PLEASE SPECIFY SERIES, SIZE, SERVICE & SET PRESSURE

# STEAM • AIR • GAS • LIQUID

SIZES FROM  
 1/4", 3/8", 1/2", 3/4"

Series 140 is a ball-seated safety valve used for applications where higher capacity may be required with a smaller sized valve. Designed, tested and built for heavy-duty applications.

**SERIES 140**



## Series 140

### Usages:

- Pressure relief, overpressure protection
- Higher capacity levels

### Features:

- Economical
- Fixed blow-down

### Options:

- Brass, Teflon or Stainless Steel ball-seat
- Ring (showing) or handle style lift lever
- Stainless steel or brass valve

Capacity charts, flow ratings and assembly prints are available.

# STEAM • AIR • GAS ASME Section VIII - NB Certified for Air, Gas and Steam applications.

SIZES 1/4", 3/8", 1/2", 3/4", 1"  
PRESSURE TO 200#  
TEMPERATURES TO 406°  
(STEAM)

Our Series 120's, and 130's (air, gas and steam) safety valves are designed for safety and pressure relief/regulation for light and medium capacity applications; where a smaller sized valve is needed. Many are manufactured to meet specific field and OEM applications.

## Series 120-126 / 130-135

### Usages:

- High quality smaller valve
- Compressors
- Receivers
- Gas lines
- Steam lines
- Air and Gas receivers
- Piping system/tanks
- Steam cleaners, sterilizers
- Autoclaves

### Features:

- Fixed blow-down
- Brass and bronze construction
- Metal-to-metal seating
- Rugged, yet economical
- Stainless steel springs
- Factory set and sealed
- Excellent seat tightness

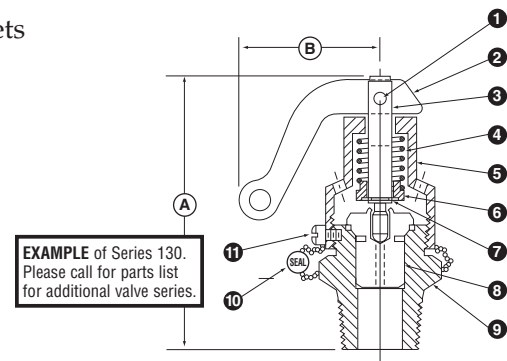
### Options:

- Stainless seat and disk
- Polishing and chrome plating
- Oxygen cleaning
- Variety of inlets, outlets and lift levers
- Many configurations (not shown)

#### PARTS IDENTIFICATION & MATERIALS

ITEM	PART NAME	MATERIAL
1	STEM PIN	BRASS
2	LIFT LEVER	STEEL*
3	SPRING POST	BRASS
4	SPRING	STAINLESS STEEL
5	BONNET	BRASS
6	SPRING PLATE	BRASS
7	RETAINING RING	STAINLESS STEEL
8	DISC	BRONZE
9	BODY	BRASS

\*STEEL PLATED



\*FIXED BLOW-DOWN CAN BE CUSTOMIZED TO YOUR APPLICATION

\*LIFT LEVER IS REQUIRED BY THE NATIONAL BOARD FOR STEAM SERVICE



#### SERIES 120, 121 & 125, 126 DIMENSION CHART • AIR/GAS/STEAM

SERIES	VALVE SIZE	SEAT SIZE	OUTLET SIZE	DIMENSIONS			MAX SET PRESSURE	WEIGHT LBS
				A	B	C		
126-121	*1/2"	3/4"	3/4"	3 7/8"	2 1/8"	1 1/4"	200	3/4
126-121	*3/4"	3/4"	3/4"	3 7/8"	2 1/8"	1 1/4"	200	7/8
126-121	1"	3/4"	3/4"	3 7/8"	2 1/8"	1 1/4"	200	7/8
126-121	1"	1"	1"	4 1/4"	2 3/8"	1 1/2"	200	1 1/4
125-120	*1/2"	3/4"	3/4"	3 3/8"	2 1/8"	1 1/4"	200	1/2
125-120	*3/4"	3/4"	3/4"	3 3/8"	2 1/8"	1 1/4"	200	5/8
125-120	1"	3/4"	3/4"	3 3/8"	2 1/8"	1 1/4"	200	5/8
125-120	1"	1"	1"	3 5/8"	2 3/8"	1 1/2"	200	1 1/8

\*ALSO AVAILABLE WITH FEMALE N.P.T. INLET. 1" SEAT NOT ASME CERTIFIED  
BLOWDOWN HELD TO APPROXIMATELY 20% OF SET PRESSURE. SPECIFY SERIES, SIZE, SERVICE & SET PRESSURE.

#### SERIES 120-121-125-126 CAPACITIES • AIR/GAS Capacity in Cu. Ft. Per Minute (SCFM)

ASME Code Section VIII (UV)-National Board Certified	CAPACITIES													
	SET PRESSURE	5	10	15	20	25	40	50	75	100	125	150	175	200
3/4" Seat	21	27	32	38	44	61	72	101	129	158	180	215	243	
SET PRESSURE	5	10	15	20	25	40	50	75	100	125	150	175	200	
**1" Seat	26	32	38	45	52	71	84	116	145	181	214	246	279	

#### SERIES 120-121-125-126 CAPACITIES • STEAM Capacity in Pounds Per Hour (#/Hr.)

ASME Code Section VIII (UV)-National Board Certified	CAPACITIES													
	SET PRESSURE	5	10	15	20	25	40	50	75	100	125	150	175	200
3/4" Seat	59	75	91	107	123	171	203	283	363	443	523	603	683	
SET PRESSURE	5	10	15	20	25	40	50	75	100	125	150	175	200	
**1" Seat	79	98	121	141	160	222	262	383	464	566	667	768	869	

\*\*NOT ASME, NATIONAL BOARD CERTIFIED

#### SERIES 130, 132, 133 & 135 DIMENSION CHART • AIR/GAS/STEAM

SERIES	VALVE SIZE	SEAT SIZE	OUTLET SIZE	DIMENSIONS			MAX SET PRESSURE	WEIGHT (OUNCES)
				A	B	C		
133	1/4"-3/8"-1/2"	1/2"	1/2"	3 5/8"	1 5/8"	1 5/8"	200	10
132	1/4"-3/8"-1/2"	1/2"		5 5/8"			200	8
130	1/4"-3/8"-1/2"	1/2"		2 7/8"			200	6
135	1/4"-3/8"-1/2"	1/2"	1/2"	3 5/8"	1 5/8"	1 1/4"	200	8

BLOWDOWN HELD TO APPROXIMATELY 20% OF SET PRESSURE. SPECIFY SERIES, SIZE, SERVICE & SET PRESSURE.

#### SERIES 130-132-133-135 CAPACITIES • AIR/GAS Capacity in Cu. Ft. Per Minute (SCFM)

ASME Code, Section VIII (UV)-National Board Certified	CAPACITIES												
	SET PRESSURE	5	10	15	20	25	30	40	50	60	70	75	80
All Series	8	10	13	15	17	19	24	28	33	37	39	41	
SET PRESSURE	90	100	110	125	130	140	150	160	175	180	190	200	
All Series	46	50	55	61	64	68	72	77	84	86	90	95	

#### SERIES 130-132-133-135 CAPACITIES • STEAM Capacity in Pounds Per Hour (#/Hr.)

ASME Code Section VIII (UV)-National Board Certified	CAPACITIES												
	SET PRESSURE	5	10	15	20	25	30	40	50	60	70	75	80
All Series	23	29	35	41	48	54	66	79	91	104	110	116	
SET PRESSURE	90	100	110	125	130	140	150	160	175	180	190	200	
All Series	128	141	153	172	178	191	203	215	234	240	253	265	

## Choosing The Correct Safety Valve

### ASME Section I for Steam Boilers — 1/2" to 2-1/2" — V and NB stamped

- **Series 560**  
For all higher capacity steam applications and pressure settings to 250 PSI. Stainless steel, teflon and o-ring seating options. 1/2" to 2-1/2".

### ASME Section VIII Steam, Air Or Gas — 1/2" to 3" — UV And NB Stamped

- **Series 570**  
Used for higher capacity applications and pressure settings to 250 PSI. Stainless steel, teflon and o-ring seating options. 1/2" to 2-1/2".
- **Series 88/89**  
Mid-range capacities and pressure settings to 250 PSI. Stainless steel seating and trimming options. 1/2" to 3".
- **Series 120/130/140**  
Used where a smaller valve may be required. Various array of inlet/outlet and size options. 1/4" to 1".

### Liquid Relief / Liquid By-Pass

- **Series 69/51/55**  
Valves designed for liquid by-pass, over-protection and liquid relief. Series 69 are available with stainless steel trimming options, generally used when abrasiveness is a factor, or chemical reactions with brass/bronze, or where higher pressure settings are required.
- **Series 17/18** are non-coded valves used for high pressure applications to 750 PSI (air, steam, gas, liquid applications).



Aquatrol is the parent company of Marsh Heating Equipment. Marsh manufactures a full line of Steam Traps, Radiator Valves, F&T Traps and Air Venting Valves.

For more information about Marsh Heating Equipment, please visit our web site at: [www.marsh-steam.com](http://www.marsh-steam.com) or contact us for more information.

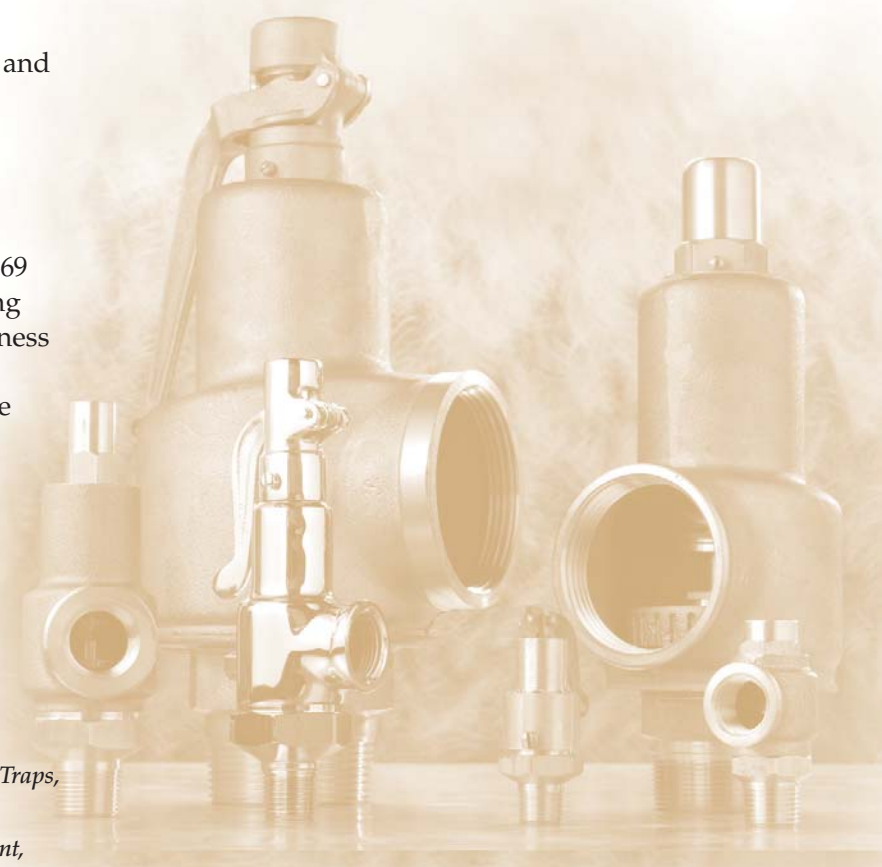
### Special Services:

- **Stainless Steel, Teflon and O-Ring seating options.**
- **Packed Lift Levers**
- **Oxygen Cleaning**
- **Female Inlets**
- **OEM/Specialty Service**
- **Polishing/Chrome Plating**
- **BPT Connections**

Visit [www.Aquatrol.com](http://www.Aquatrol.com) for further service information installation instructions and recommendations.

### Comparison Charts:

Aquatrol's Valves are interchangeable with all manufacturers. Please contact us for details.



## Aquatrol, Inc.

Founded in 1947, Aquatrol has been a leader in the brass bronze valve market for 60 years. Two new lines of product have been successfully developed since 2005, with more to come. All of our product, including machining, engineering, in-house laboratory and flow testing is done right here, in the USA; a longer termed and dedicated approach to our employees, as well as ensuring all aspects of quality are controlled by us. Aquatrol's staff consists of seasoned specialists and average over 25 years in the safety and relief valve markets. On-goingly, our goal is to set the standards of service and quality within the Safety Valve industry.

Thank you,  
—The Aquatrol Staff  
ASME and NB Manufacturer since 1947



Canadian CRN Certified

### Our Guarantee/Warranty

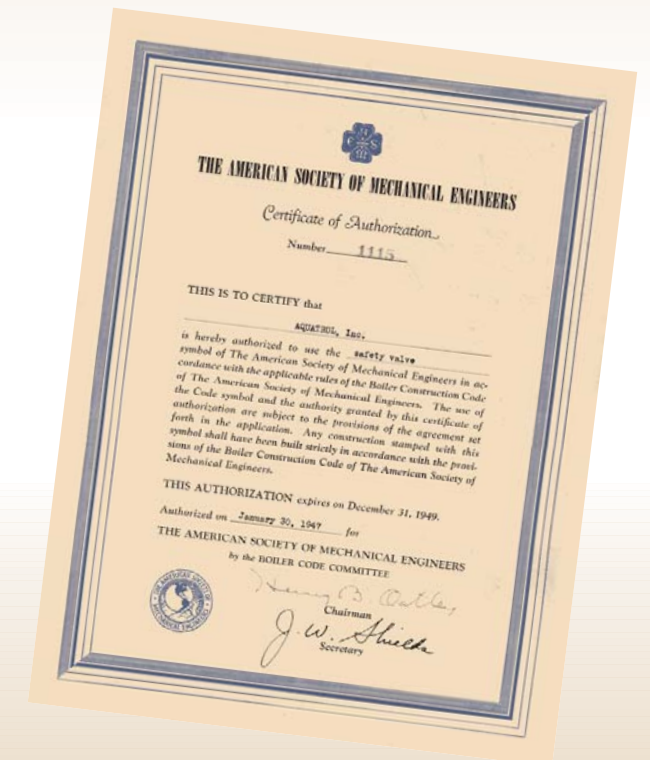
Unless otherwise specified, Aquatrol Valves are guaranteed for a period of 1 year from shipment. The guarantee covers all parts and labor. The guarantee applies to Valves properly used under industry standards for sizing and usages. Aquatrol will not be held responsible for any form of incidental or consequential damages. Our valves all ship FOB, Elburn, IL. Unless otherwise specified, we will choose the most efficient manner of delivery.

**Aquatrol**  
Safety & Relief Valves

## When Ordering...

Please specify the service usage (Steam, Air, Gas, or Liquid); set pressure point in PSI, size of inlet and outlet, as well as the Aquatrol valve series number.

Contact Aquatrol if there are any particular sizing or special requirements.



### Visit [www.aquatrol.com](http://www.aquatrol.com):

- **INSTALLATION & MAINTENANCE**
- **SAFETY AND RELIEF VALVE BASICS**
- **GENERAL SIZING GUIDELINES**
- **OUR FAVORITE LINKS:**
  - **CHEMICAL REACTION CHARTS**
  - **CONVERSION CHARTS**
  - **INDUSTRY LINKS**
- **GENERAL PRODUCT INFORMATION**

To Order, Contact Us  
At 1-800-323-0688  
Or Fax To 630-365-5434.  
[sales@aquatrol.com](mailto:sales@aquatrol.com)